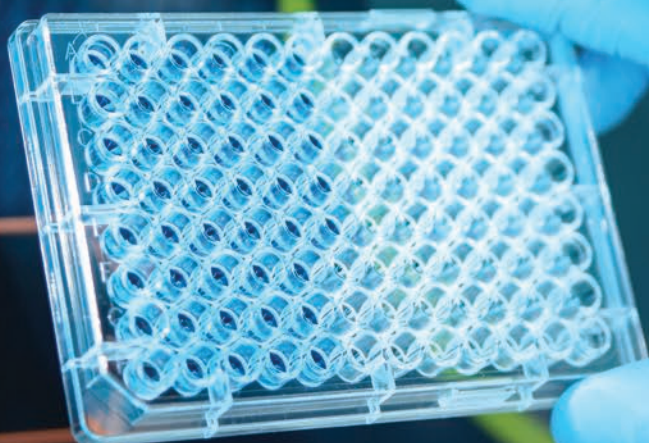


SERVICE

SPARE PARTS

SALES



PRODUCT CATALOGUE 2016

bsdrobotics.com



For all BSD products, we offer:*

- ✓ *Continuity of Service and Support*
- ✓ *Large inventory, long term supply of spare parts*
- ✓ *Authorised service agents*
- ✓ *Technical support and software updates*
- ✓ *New Sales*

** BSD100, BSD300, BSD304, BSD600 Duet, BSD600 Plus.*

Company Profile



Address: Unit 17, 18 Hinkler Court
Brendale QLD 4500
Australia

Sales: sales@microelectronics.com.au
Support: support@microelectronics.com.au
Tel: +61 7 3881 1834

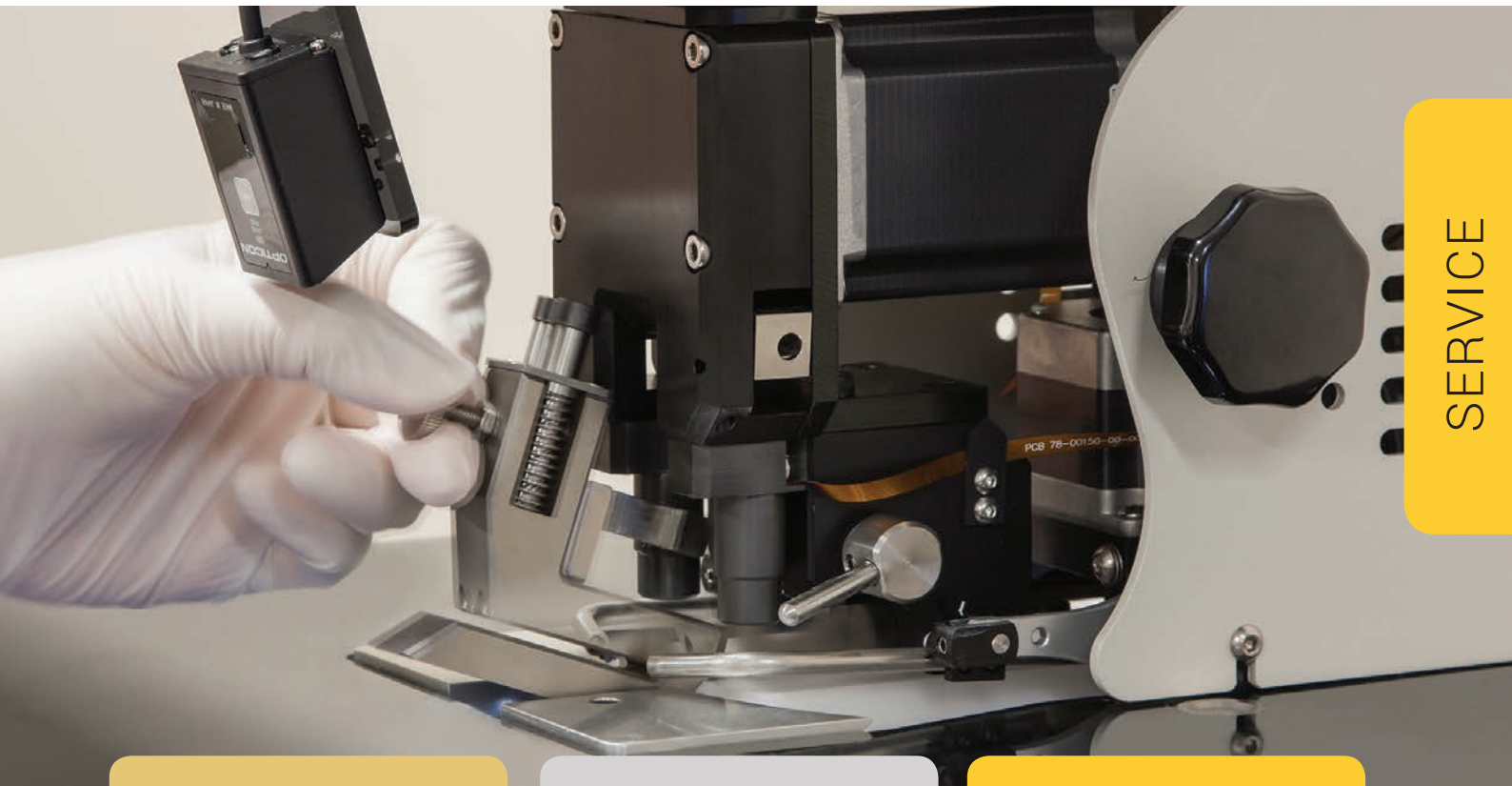
Microelectronic Systems was incorporated in 1996 and we have over 60 years of combined experience in the design, manufacture and service of BSD instruments.

With a global network of distributors and service agents, we offer instrument service contracts and one-off services for all BSD models.*

Spare parts are readily available and we maintain a large parts inventory in Australia and commonly used parts in the USA.

See more information on our website:

www.bsdrobotics.com



BRONZE

One repair visit

One preventive maintenance
service

Technical support via
email or telephone

Spare parts at list price

SILVER

One repair visit

Two preventive maintenance
services

Technical support via
email or telephone

15% discount on spare parts

GOLD

One repair visit
+ one emergency visit

Two preventive maintenance
services

Technical support (incl. free
software upgrades)

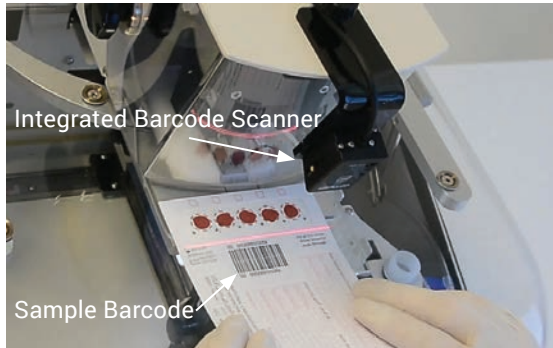
Included repair and spare parts *

* Conditions apply.

Service contracts are normally 12 months and longer term contracts are available. Contact us for full service terms and conditions. Servicing is available in most regions with a range of options to suit a level of service and budget to ensure your BSD instrument operates as a reliable and efficient part of your laboratory workflow.

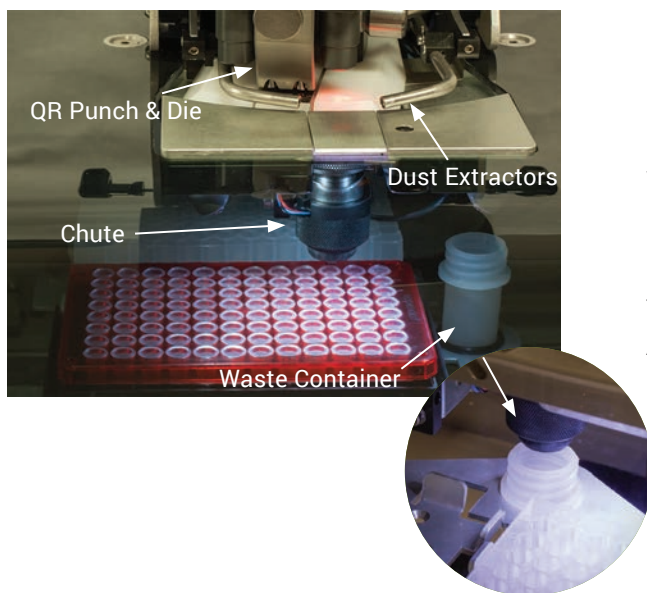
Service contracts within the Australia and New Zealand region are handled directly by Microelectronic Systems. A network of authorised service agents provide spare parts, service and service contracts across the globe.

See back page for contact details.



TRACEABILITY

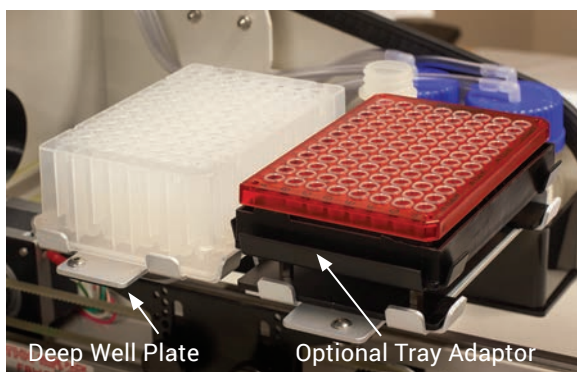
Punch data files are generated for sample tracking and traceability. The BSD output files can be configured to interface with a wide range of LIMS software. Barcodes of samples are scanned prior to punching and plate barcodes can be scanned for inclusion in the punch file. Sample delivery into the plate is confirmed using an optical sensor.



INTEGRITY

Minimisation of sample carry-over is achieved using features for automatic and routine cleaning of the punch area. A separate waste container on the plate deck allows a programmable number and frequency of cleaning punches to be performed as part of the test sequence.

An optional dust extraction system vacuums paper dust from the punching area. The quick release (QR) punch and die can easily be removed and cleaned.



COMPATIBILITY

BSD Punchers are compatible with a wide range of collection device and plates. The tray height can be set to accommodate standard 96 well or deep well plates or test tube adaptors. Optional tray adaptors are available to allow combinations of plate heights and tube adaptors in the same test run.

OPTIONAL EXTRAS

▶ Autotrigger Unit

All BSD punchers come with a foot switch for activating each punch or punch pattern. The Autotrigger function has an optical sensor on the punching deck that senses the presence of a card. Upon detection, the punch is activated after an adjustable time delay. This avoids the need to manually activate the punch using the foot switch and can result in reduced punching times when processing a batch of sample cards.



Autotrigger Unit
Suits BSD600Duet and BSD300 models
Part Number: AS-MOD-AUTO

▶ Dust Extraction System

The dust extraction system has a vacuum system to remove paper dust from the punching deck to keep the area clean and minimise incidence of sample carry-over. The system includes a replaceable filter.



Dust Extraction System
Suits all BSD Models
Part Number: AS-MOD-DE

▶ Other Options

- Plate Adaptors
- Tube Holders
- Plate Barcode Reader
- More options available - just ask us!

BSD SERIES 3

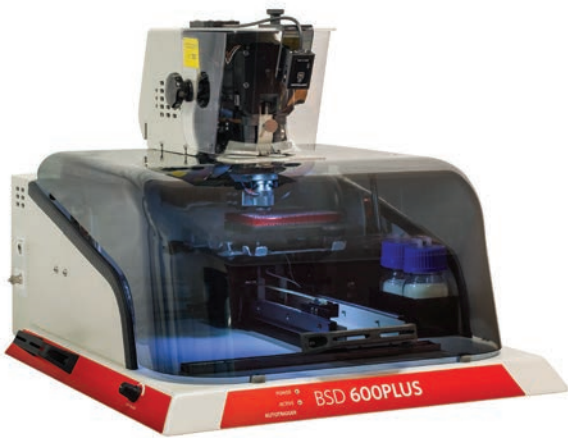
The BSD100 and BSD600 Plus are third generation instruments with new features and improvements for ease of use.

These models share a common platform and employ the latest Mark 4 punch and die design with a quick release mechanism for easy removal for cleaning and inspection.

The **BSD100** offers a reliable solution with core features, while the **BSD600 Plus** comes with a full feature set.



MODEL 1001A



MODEL 6003A

BSD100

2 plate capacity

96 well standard or deep well types,
PCR plate or 96 tube adaptors

Single punch size

Air humidifier system

Integrated barcode reader

-

-

Autotrigger option [★]

Dust extraction system option [★]

USB connection

External 110-240V power pack

575 W x 600 D x 500 H (mm)

[★]Optional Extras

BSD600 PLUS

2 plate capacity

96 well standard or deep well types,
PCR plate or 96 tube adaptors

2 punch sizes

Air humidifier system

Integrated barcode reader

Programmable punching pattern

Light targeting system

Autotrigger

Dust extraction system option [★]

USB connection

External 110-240V power pack

575 W x 600 D x 500 H (mm)

BSD SERIES 2

The BSD300 and BSD600 Duet are second generation BSD punchers with over a decade of field proven reliability. The **BSD300** offers a larger plate capacity of up to 6 plates and has been a popular choice for newborn screening.



MODEL 3002A

The **BSD600 Duet** remains a choice by laboratories with an existing install base of BSD600 Duets with existing operational familiarity and process validation.



MODEL 6002A

BSD300

6 plate capacity

96 well standard or deep well types,
PCR plate or 96 tube adaptors

2 punch sizes

Air humidifier system

Integrated barcode reader

Programmable punching pattern

Light targeting system

Autotrigger option [★]

Dust extraction system option [★]

RS232 port

Internal 110-240V power

1000 W x 450 D x 400 H (mm)

BSD600 DUET

2 plate capacity

384 or 96 well standard or deep well types,
PCR plate or 96 tube adaptors

2 punch sizes

Air humidifier system

Integrated barcode reader

Programmable punching pattern

Light targeting system

Autotrigger option [★]

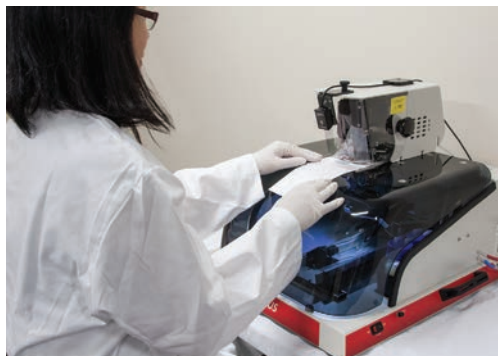
Dust extraction system option [★]

RS232 port

Internal 110-240V power

650 W x 530 D x 460 H (mm)

[★]Optional Extras



BSD SERIES 3 HIGHLIGHTS

▶ 1. Improved Ergonomics

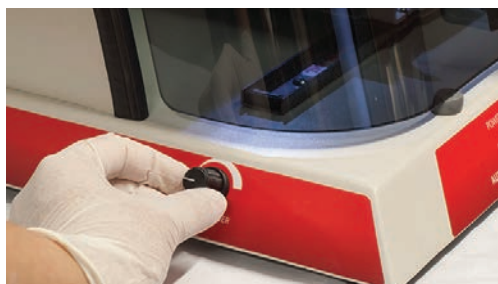
- Curved front for comfort when sitting or standing.
- Clear one-piece cover and internal lighting for high visibility of punching operations.
- Lift-up cover for easy access for plate loading from the front.

▶ 2. Quick Release Punch and Die



Simple locking/release mechanism for punch removal in seconds.
Allows swapping of punch and dies with minimal down-time.

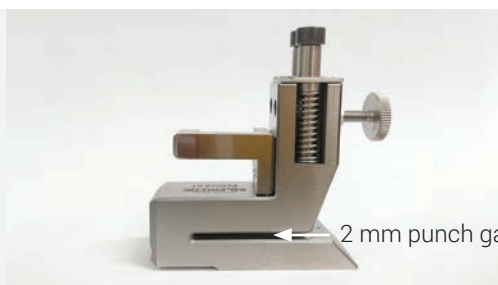
Provides ease of maintenance and cleaning.



Adjustable autotrigger delay

▶ 3. Integrated Autotrigger

- Fitted as standard on the BSD600 Plus, optional for the BSD100.
- Automatically activates the punch upon detection of the sample card with an adjustable delay time.
- Can reduce punching times when processing a batch of sample cards.



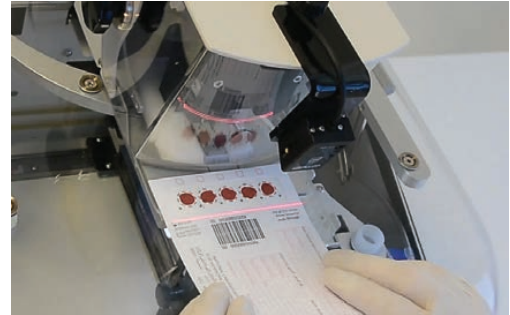
2 mm punch gap

▶ 4. Extended Sample Compatibility

- Wider punch gap of 2.0 mm to suit thicker sample collectors or materials.
- Wide range of sizes from 1.0 to 6.0 in single and dual punch size configurations.

5. Compact Barcode Scanner

- A compact USB unit provides sample barcode scanning and recording in the punch file with corresponding sample locations in the plate.
- An option is available for a plate barcode reader.



6. Improved Chute Design

- An improved 5 beam design provides improved detection of disk delivery to the plate, particularly for smaller punching sizes.
- Robust easy grip connector for easy unplugging and re-plugging of the chute connection.



7. USB Interface

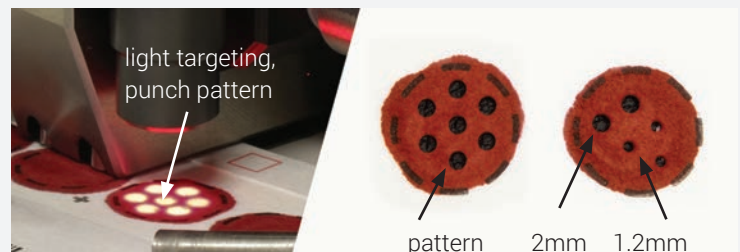
- USB interfaces to host computer for compatibility with desktop and laptop computers.
- USB connection of barcode scanners.



BSD100 vs BSD600 PLUS



manually positioned single punches



BSD100

- Single punch size
- No light targeting
- No pattern punching
- Manual place for each punch

BSD600 Plus

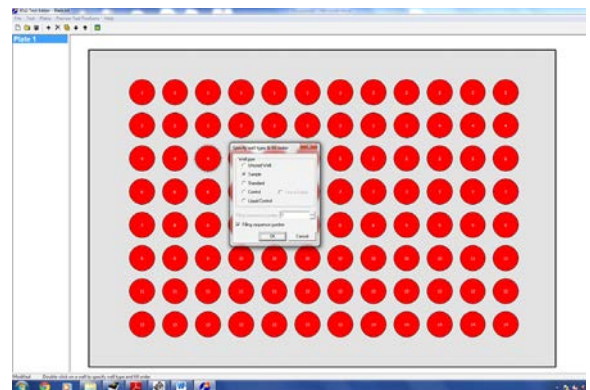
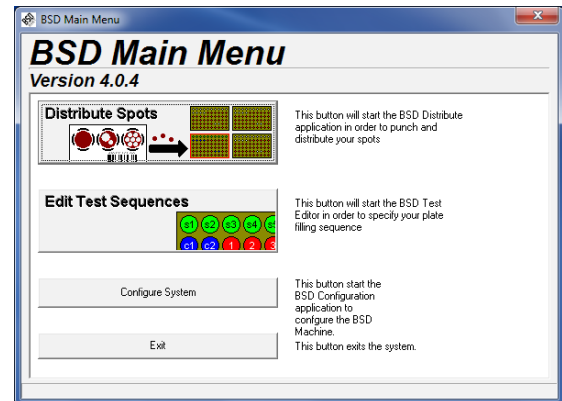
- Dual punch sizes
- Light targeting system
- Programmable punching pattern
- Shrink pattern feature

Easy to use software

All BSD punchers are computer controlled and are complemented with flexible and easy to use software. BSD software allows flexible programming of punching protocols to suit a wide range of laboratory procedures and processes using a variety of media and plate maps.

The software generates output files after every run with each file including fields for test name, plate number and barcode, grid reference, sample barcode, type of disk, fill order and comments.

Files can be easily viewed or imported by third party laboratory information systems and downstream instruments for sample tracking.



3 Easy Steps

1

Configure instrument settings for barcode and punch file options, punch and cleaning options.

2

Add or Edit test sequences to define content of wells and filling order.

3

Run a test to fill a plate and generate a BSD output punch file and plate map.

BSD Puncher Order Codes

The table below shows the model numbering system for BSD puncher models.

Please specify the model, punch sizes and required voltage when requesting a quote.

Model	Version	Build		Punch size (mm)			Voltage	Plug Style
				Left	Right			
100	1	A	-	32	XX	-	110	US
100	1	A		1.0	1.0		110	AU
300	2	DO		1.2	1.2		240	EU
600	3			1.5	1.5			UK
				2.0	2.0			US
				3.0	3.0			
				3.2	3.2			
				3.8	3.8			
				4.0	4.0			
				4.7	4.7			
				6.0	6.0			

* example only

Example 1:

1001A-32XX-110US

BSD100 (Version 1), Model A, Single 3.2mm punch, 110V, US Plug.

Example 2:

6003A-1220-240AU

BSD600 Plus (Version 3), Model A, Dual Punch 1.2mm / 2.0mm, 240V, Australian Plug.

Example 3:

6002A-3247-240EU

BSD600Duet (Version 2), Model A, Dual Punch 3.2mm / 4.7mm, 240V, European Plug.



bsdrobotics.com

GLOBAL SALES AND SUPPORT

Australia **Microelectronic Systems**
Sales: sales@microelectronics.com.au
Support: support@microelectronics.com.au
Phone: +61 7 3881 1834

WORLD WIDE DISTRIBUTORS

NORTH AMERICA

Astoria Pacific
phone: +1 (800) 536 3111 (USA Toll Free)
phone: +1 (503) 657 3010 (Local)
email: spotcheck@astoria-pacific.com

LATIN AMERICA

BioDominium Diagnostics
phone: +1 305 668 7667
email: service@biodominium.com

Exogena Ltda
phone: +57 1 623 3402
email: exogena@exogena.com

Immunospark Latino America Diagnosticos
phone: +55 43 9642 6563
email: sales@immunospark.com

Importadora Fabhet SRL
phone: +51 511 616 1717
email: jfebres@fabhet.com.pe

Mbiolog Diagnosticos
phone: +55 31 3507 0707
web: http://www.mbiolog.com.br

Zentech S.A.
See European contact.

EUROPE

Belgium **Zentech S.A.**
phone: +32 4 3614232
email: info@zentech.be

Denmark **AH Diagnostics**
phone: +45 8745 9010
email: ahdiag@ahdiag.dk

Italy **Immunospark SRL**
phone: +39 0686324830
 +39 3669952442
email: sales@immunospark.com

Greece **Interlab Ltd**
phone: +30 210 953 2220
email: gch@interlab.gr

Slovak Republic **Medic Labor**
phone: +421 48 381 0259
email: slaszlo@medic-labor.sk

ASIA

Japan **Central Scientific Commerce Inc.**
phone: +81 3 5820 1500
email: tokyo@cscjp.co.jp

Korea **Greenmate Biotech Corp**
phone: +82 2 5810131
email: info@greenmate.co.kr

China **Ausbio Laboratories Co. Ltd.**
phone: +86 10 8768 1300
email: ausbio@ausbio.com

Hong Kong **Eastwin International Trading Limited**
phone: +852 2887 1786
email: info@eastwinhk.com

Philippines **Scientific Biotech Specialties Inc.**
phone: +63 2 8981572
email: sbisi.diag@sbisi.com.ph

Singapore **Research Biolabs**
phone: +65 6854 8182
email: sales@researchbiolabs.com

Singapore **Manyara Biotech Pte. Ltd.**
phone: +65 8658 1366
 +86 186 1231 8899
email: sales@manyarabio.com
Also covers Malaysia, Indonesia & Thailand

IRAN AND MIDDLE EAST

Pishro Tashkhis
phone: 009821 77 650008 -9
email: commercial@pishrotashkhis.com

